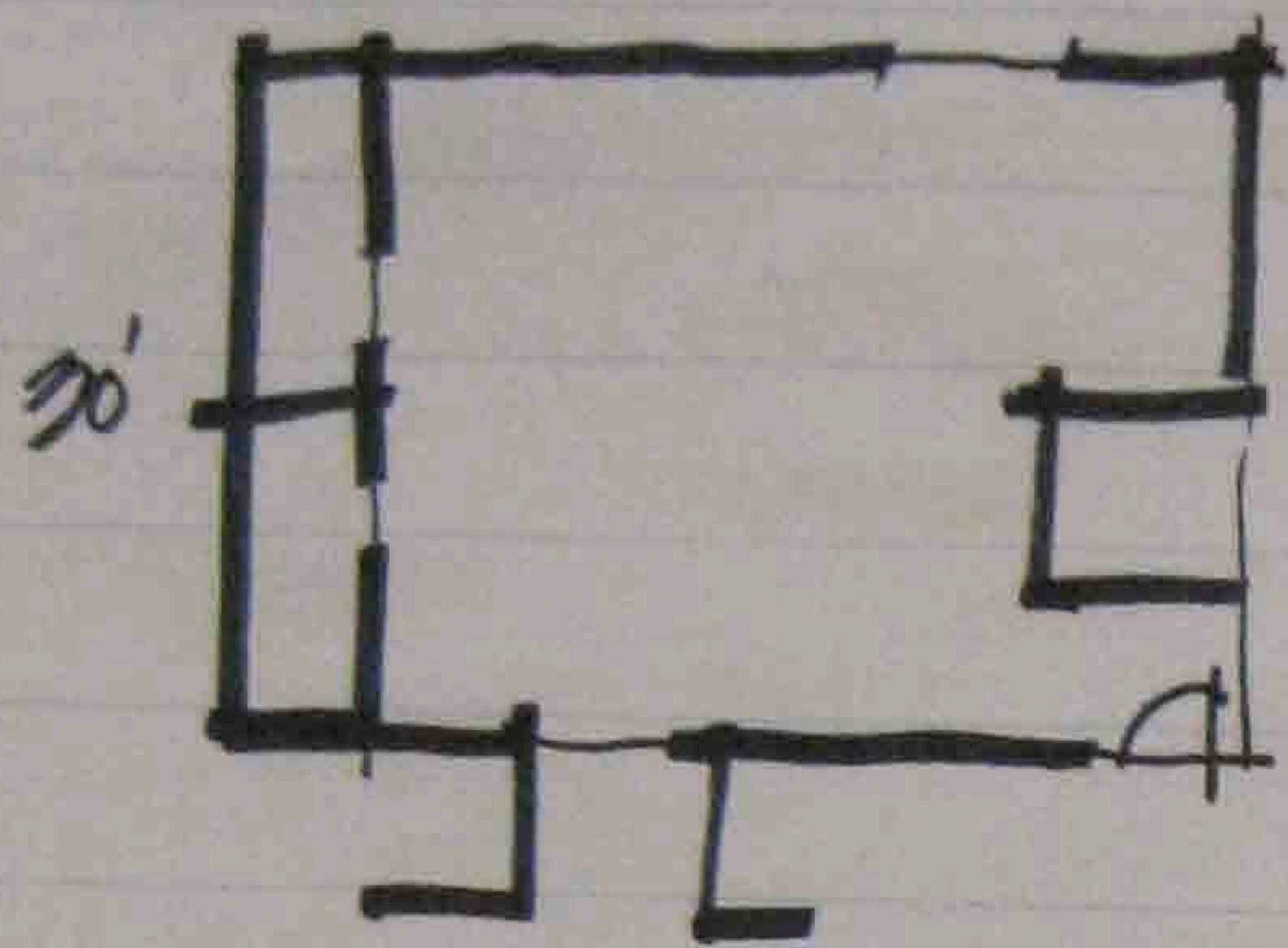


10.25.2011.

# EQ REPAIR, LOAD DOCK, CUSTODIAL, STOR'G.

- ② F.T. STAFF
- EQ REPAIR
- EXT & LIGHTNING
- 40'

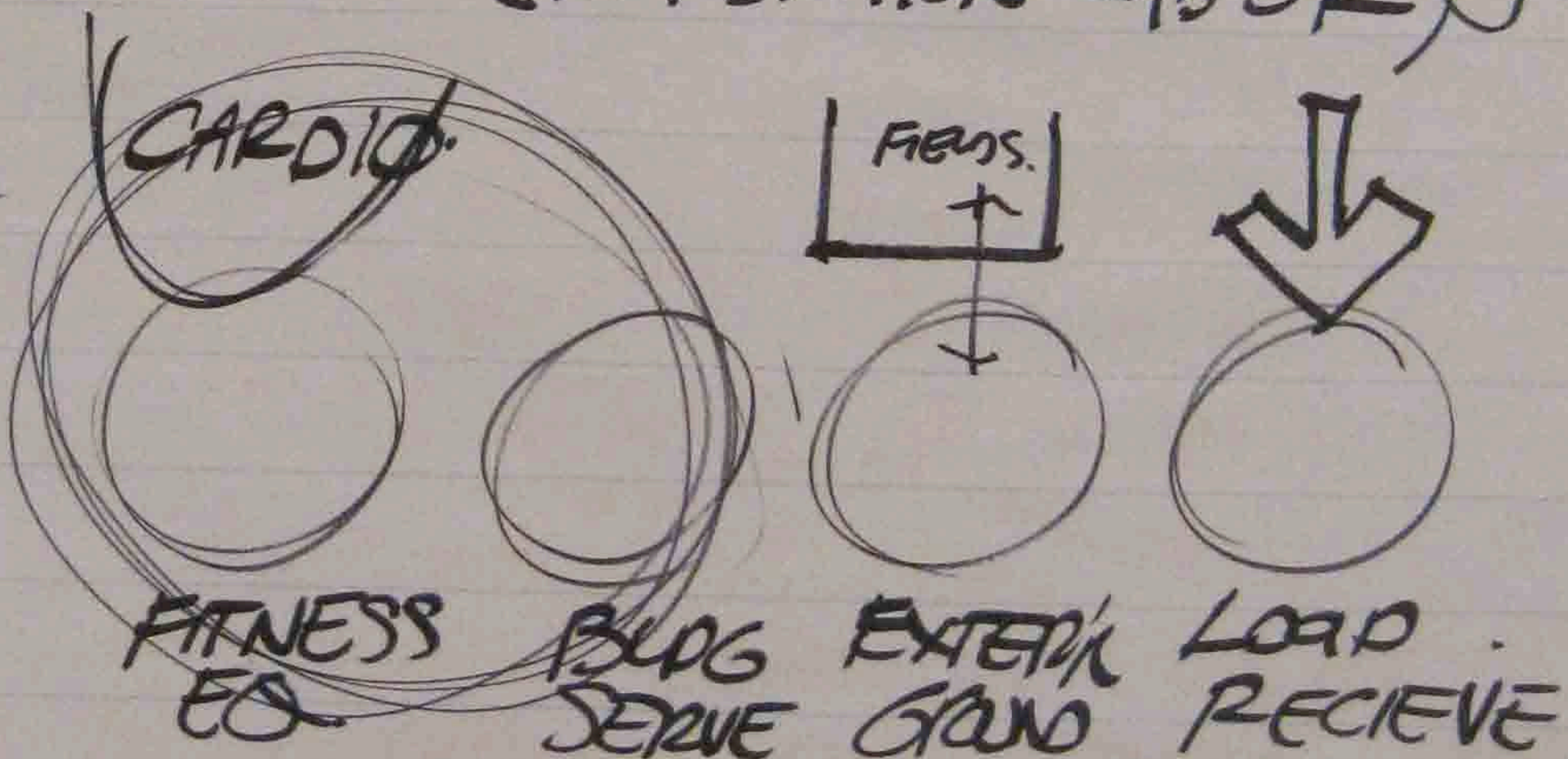
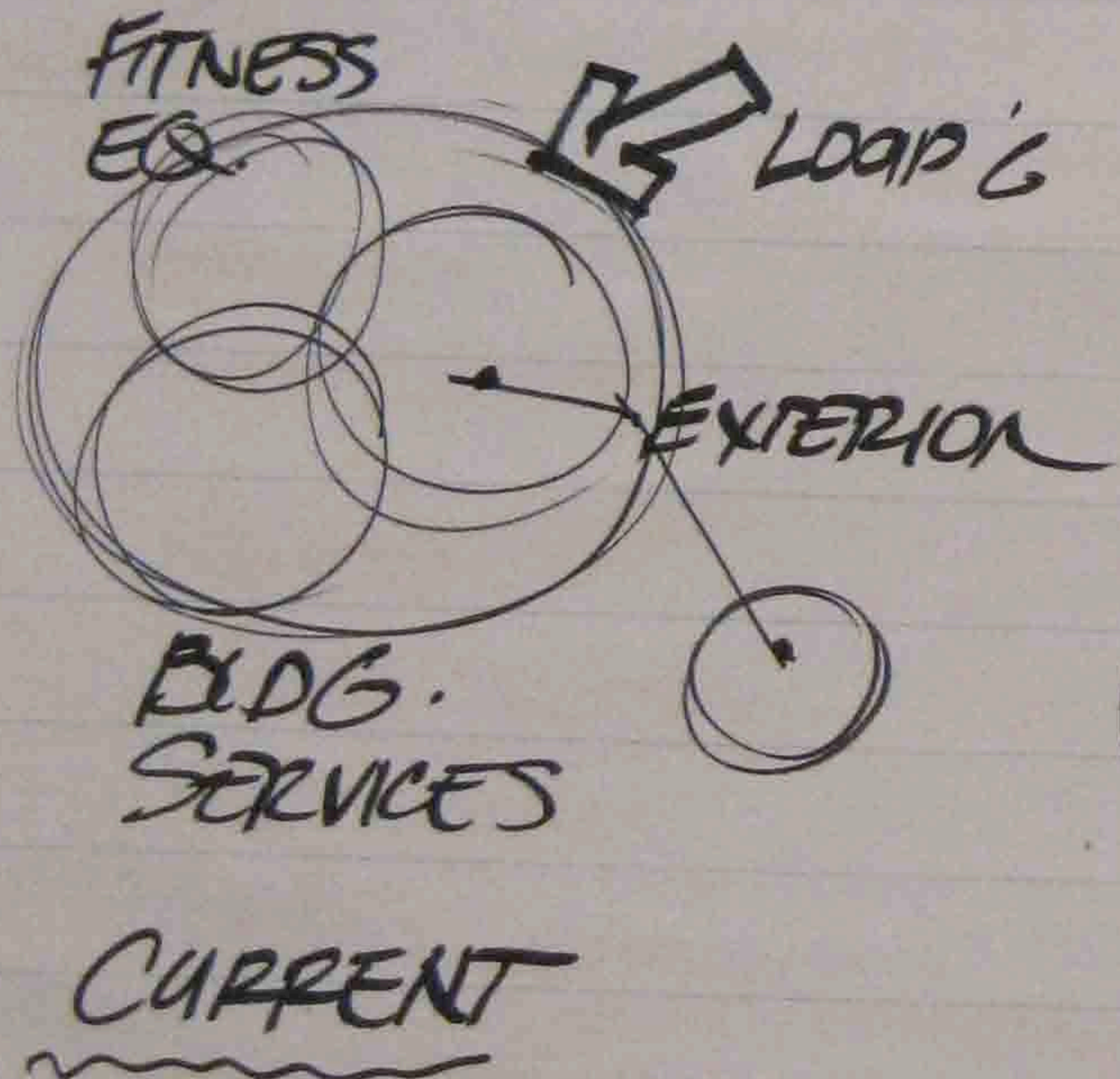


- + DEDICATED
- + O.H. LOAD DOOR
- + Lg ELEVATOR.
- + SHOP SIZE.

- ELEV IS NOT FREIGHT.. (LOAD CAPACITY)
- SPECIALY VENTILIATION NOT ACCEPTABLE.

WELDING PAINTING (small QTY).

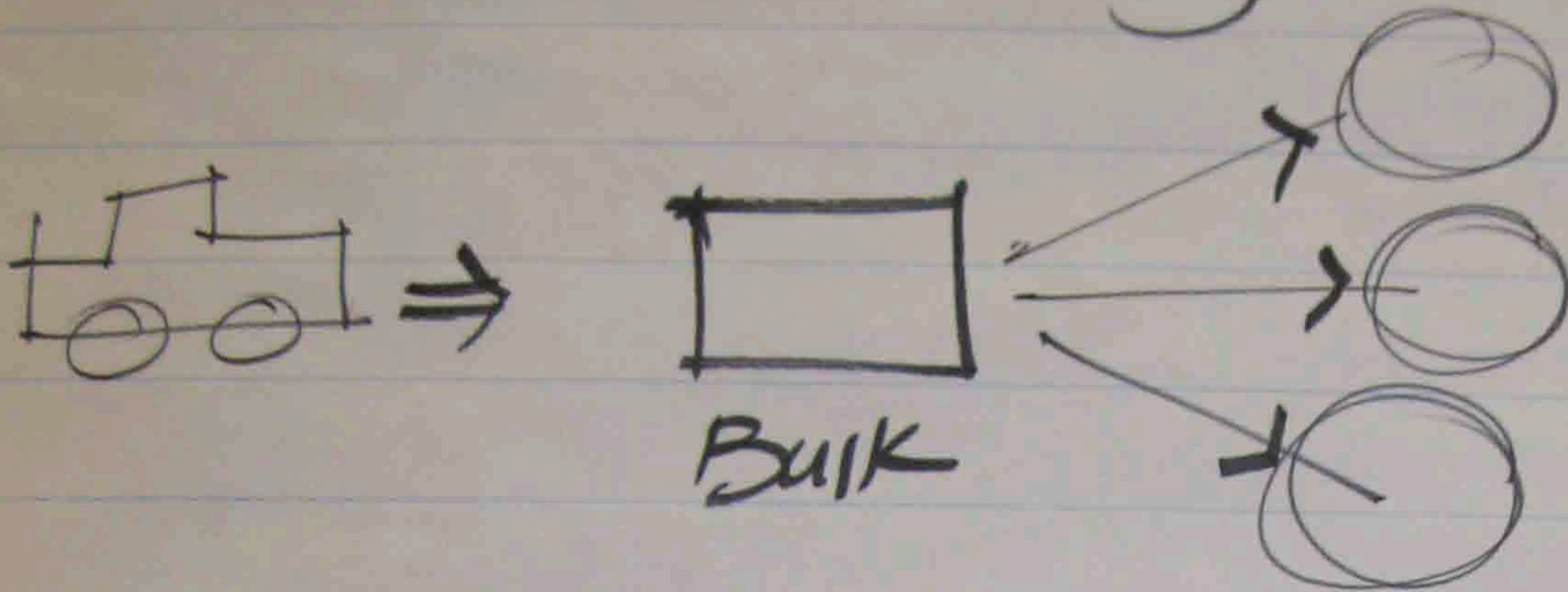
- AWKWARD ELEV ACCESS
- EXT DRIVE.. TO SHORT.
- REMOTE & "OUT-OF-WAY"
- IN-SHOP OFFICE UNNECESSARY (WORKSTATION w/b OK)



BETTER

# CUSTODIAL STORG.

## INCOMING & BULK STORG.



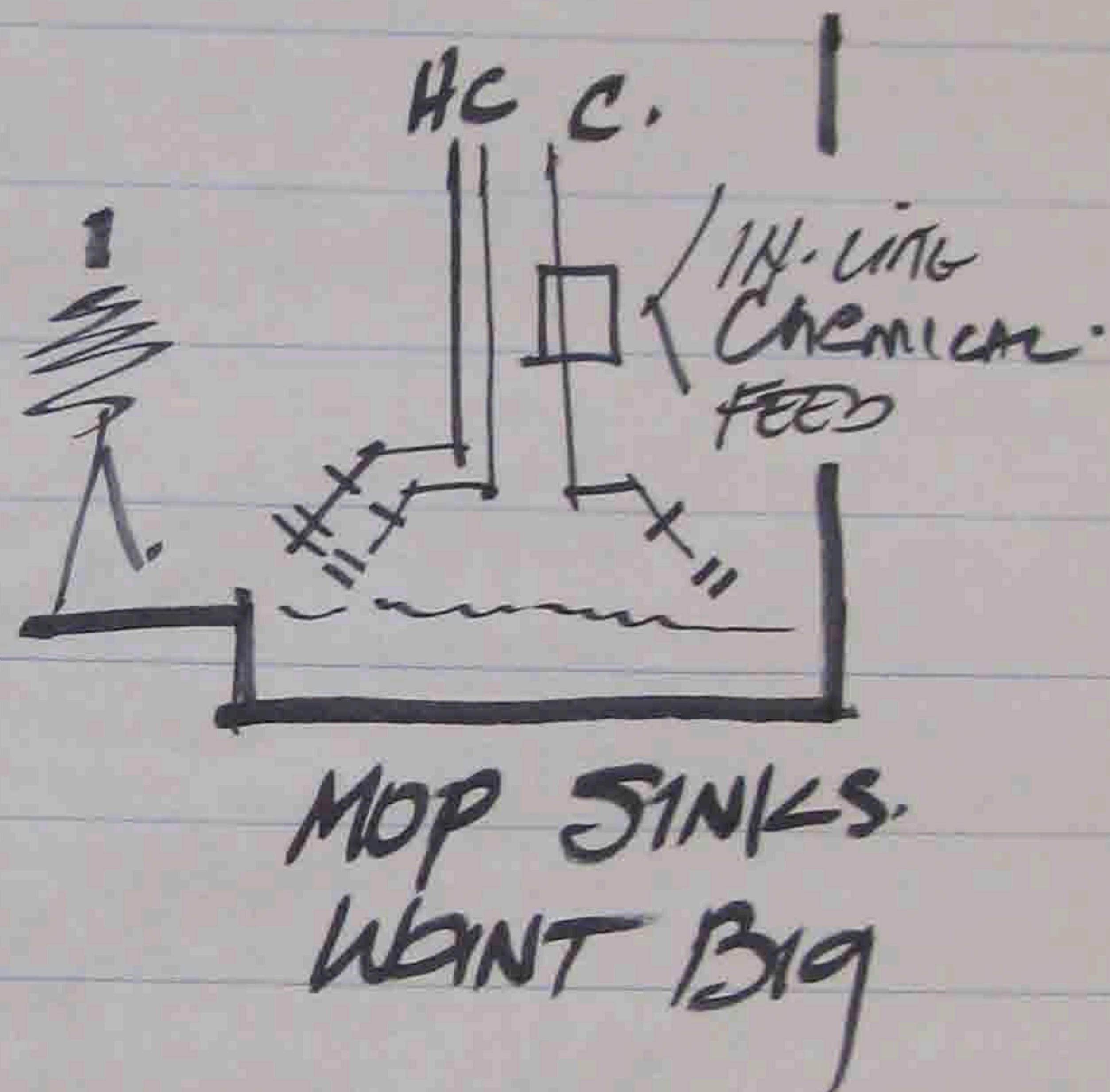
## CUSTODIAL CLOSETS

- MIN 1/LEVEL
- ONE NEAR EACH MAJOR ACTIVITY ZONE
- ONE EACH L/R!
- NEAR BATHROOMS

AUTO SCRUBBER  
CHEMICAL STA.

FLOOR SINK.

STORAGE SHELF.

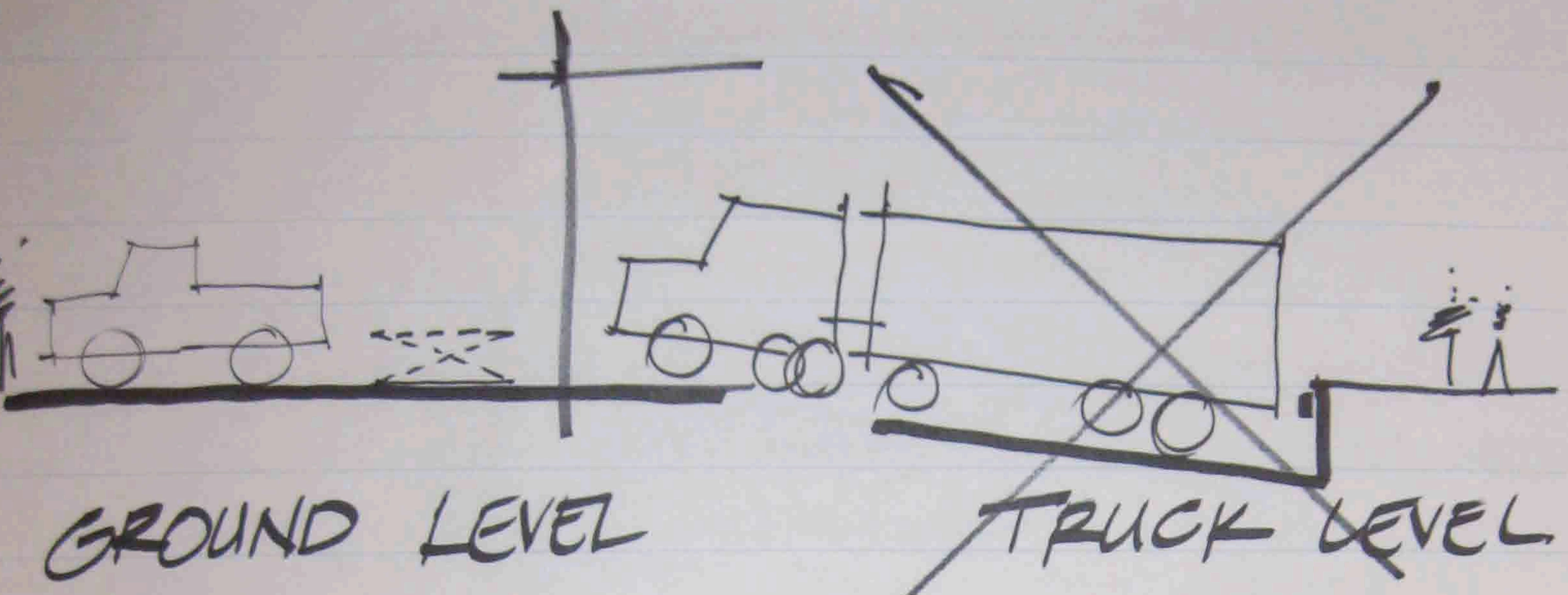


## MAJOR CLEAN EQ

- 1 RIDING.
- 3 WALK BEHIND
- 1 CHARIOT.
- 2 SWEEPERS.
- 2 FUTURE CLEANERS.
- 1 CARPET CLEANER.
- WHEELED GARBAGE CART.

## GEN STORAGE

- Tables & chairs (300)
- ROUNDS (300)
- 8 TOPS.
- AVEQ.
- HighLIFT (GEENIE).
- \* MISC CRAP.



GROUND LEVEL

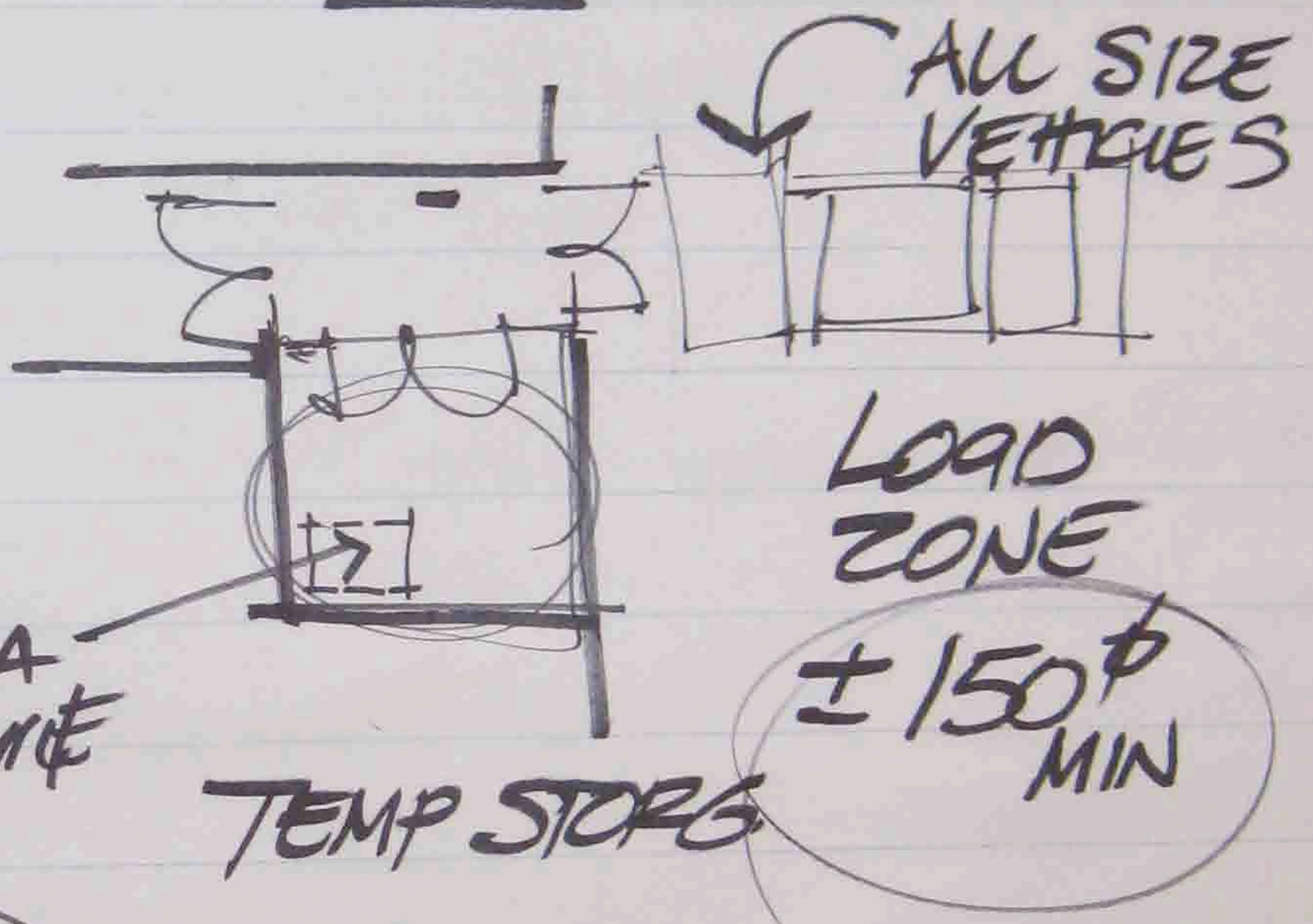
TRUCK LEVEL

YES

NO

DELIVERIES

JANITORIAL  
 FITNESS EQ.  
 SEMI TRACTOR  
 3x/year.



ALL SIZE VEHICLES

LOAD ZONE

± 150' MIN

EXTRA SECURE

TEMP STORG

ADMIN

LOAD

HOT ROOM

BIGGER HOT ROOM

PROXIMITY

# EXTERIOR GROUNDS

MULE (FUEL) + FIELD GRADER / SWEEPER,  
~~GATOR~~

OTHER FUEL PILES ETC

GOLF CART (BATTERY)

POWER WASHER

LEAF BLOWER

CHEM ETC

RIDING SWEEPER (FUEL), ELECTRIC  
 HOSES & EQ.

TENNIS NETS.

FUTURE MULE #2, OR GOLF CART =  
 CHEMICAL CABINET

BALLAST FOR SYNTHETIC FIELDS.

## EQ GARAGE

CLUB SP.	PE
20%	REC.
	I.M.
	80%

GARAGE

40'  $\phi$

CLUB SP.  
 CLOSET / CAB

I.M.

150'  $\phi$

O.H. DOOR

MULE

PE / REC

